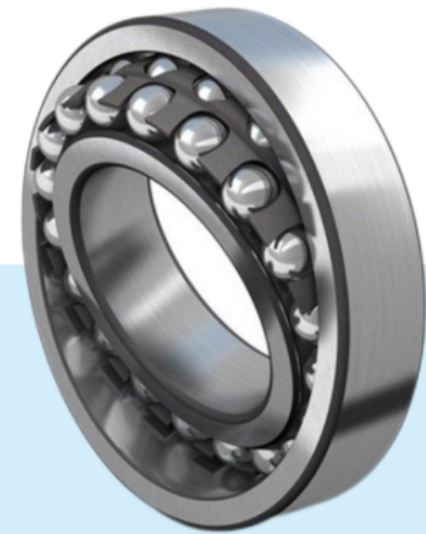


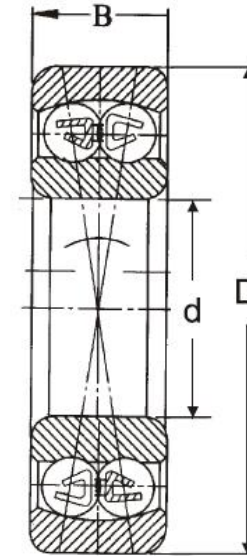


SELF-ALIGNING BALL BEARING



SELF-ALIGNING BALL BEARING

# METRIC SERIES SELF-ALIGNING BALL BEARING



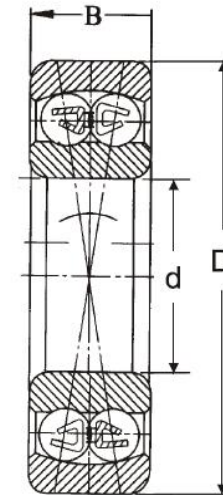
Bearing No.	Boundary dimensions				Basic load ratings(kN)		Limiting speed		Mass
	mm				Dynamic	Static	rpm		
	d	D	B	r <sub>smin</sub>	Cr	Cor	Grease	Oil	
1200	10	30	9	0.6	5.5	1.19	21,000	24,000	0.033
1201	12	32	10	0.6	5.6	1.27	18,000	22,000	0.04
1202	15	35	11	0.6	7.45	1.75	16,000	19,000	0.049
1203	17	40	12	0.6	7.9	2.01	14,000	17,000	0.072
1204	20	47	14	1	9.9	2.61	13,000	15,000	0.116
1204K	20	47	14	1	9.9	2.61	13,000	15,000	0.114
1205	25	52	15	1	12.1	3.3	11,000	13,000	0.138
1205K	25	52	15	1	12.1	3.3	11,000	13,000	0.135
1206	30	62	16	1	15.6	4.65	9,200	11,000	0.217
1206K	30	62	16	1	15.6	4.65	9,200	11,000	0.213
1207	35	72	17	1.1	15.8	5.1	8,000	9,400	0.317
1207K	35	72	17	1.1	15.8	5.1	8,000	9,400	0.312
1208	40	80	18	1.1	19.3	6.55	7,100	8,400	0.414

## METRIC SERIES SELF-ALIGNING BALL BEARING

1208K	40	80	18	1.1	19.3	6.55	7,100	8,400	0.407
1209	45	85	19	1.1	21.9	7.35	6,400	7,500	0.457
1209K	45	85	19	1.1	21.9	7.35	6,400	7,500	0.448
1210	50	90	20	1.1	22.7	8.1	5,800	6,800	0.515
1210K	50	90	20	1.1	22.7	8.1	5,800	6,800	0.504
1211	55	100	21	1.5	26.8	10	5,300	6,200	0.692
1211K	55	100	21	1.5	26.8	10	5,300	6,200	0.679
1212	60	110	22	1.5	30	11.5	4,900	5,800	0.879
1212K	60	110	22	1.5	30	11.5	4,900	5,800	0.864
1213	65	120	23	1.5	31	12.5	4,500	5,300	1.13
1213K	65	120	23	1.5	31	12.5	4,500	5,300	1.11
1214	70	125	24	1.5	34.5	13.8	4,200	4,900	1.24
1215	75	130	25	1.5	39	15.7	3,900	4,600	1.33
1215K	75	130	25	1.5	39	15.7	3,900	4,600	1.31
1216	80	140	26	2	40	17	3,700	4,300	1.65
1216K	80	140	26	2	40	17	3,700	4,300	1.62
1217	85	150	28	2	49	20.8	3,500	4,100	2.06
1217K	85	150	28	2	49	20.8	3,500	4,100	2.03
1218	90	160	30	2	57	23.5	3,300	3,800	2.51
1218K	90	160	30	2	57	23.5	3,300	3,800	2.47
1219	95	170	32	2.1	64	27.1	3,100	3,600	3.1
1219K	95	170	32	2.1	64	27.1	3,100	3,600	3.05
1220	100	180	34	2.1	69	29.7	2,900	3,400	3.7
1220K	100	180	34	2.1	69	29.7	2,900	3,400	3.64
1221	105	190	36	2.1	74.5	32.5	2,800	3,300	4.34
1222	110	200	38	2.1	80.5	35.5	2,600	3,100	5.15
1222K	110	200	38	2.1	80.5	35.5	2,600	3,100	5.07



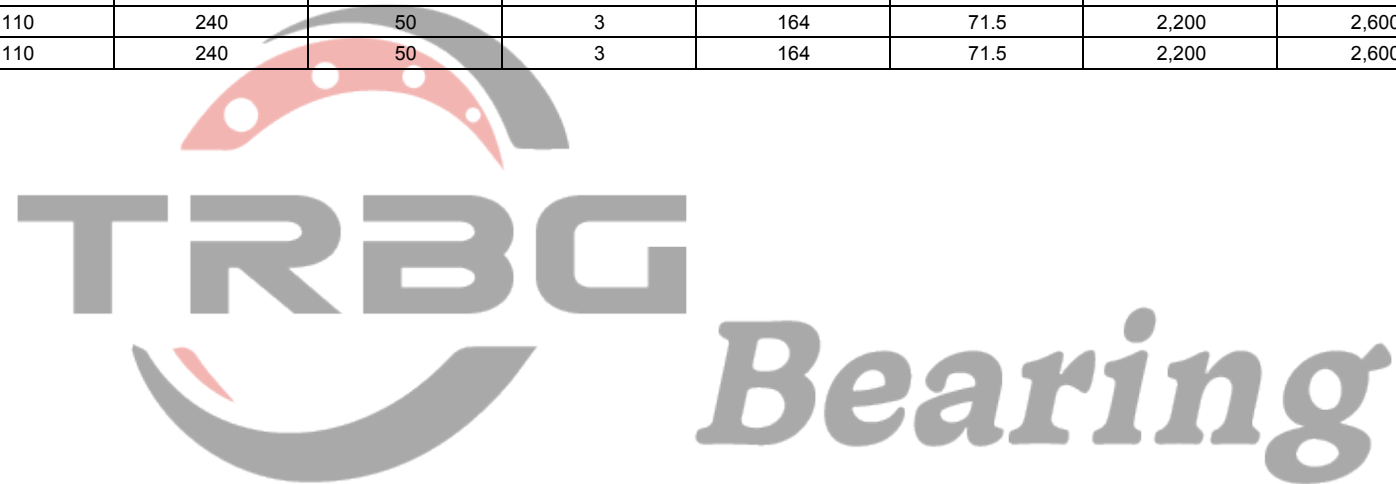
# METRIC SERIES SELF-ALIGNING BALL BEARING



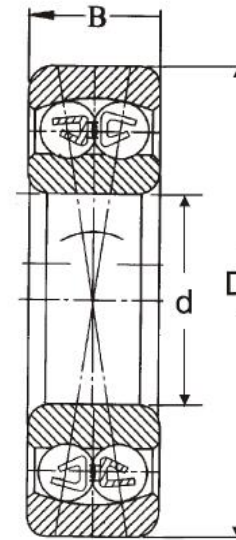
Bearing No.	Boundary dimensions				Basic load ratings(kN)		Limiting speed		Mass
	mm				Dynamic	Static	rpm		kg
	d	D	B	r <sub>smin</sub>	Cr	Cor	Grease	Oil	
1300	10	35	11	0.6	7.25	1.62	18,000	21,000	0.058
1301	12	37	12	1	9.45	2.16	16,000	18,000	0.066
1302	15	42	13	1	9.55	2.3	13,000	16,000	0.092
1303	17	47	14	1	12.5	3.2	12,000	14,000	0.128
1304	20	52	15	1.1	12.4	3.35	11,000	13,000	0.16
1304K	20	52	15	1.1	12.4	3.35	11,000	13,000	0.158
1305	25	62	17	1.1	18	5	9,100	11,000	0.255
1305K	25	62	17	1.1	18	5	9,100	11,000	0.251
1306	30	72	19	1.1	21.3	6.3	7,700	9,100	0.383
1306K	30	72	19	1.1	21.3	6.3	7,700	9,100	0.377
1307	35	80	21	1.5	25.1	7.85	6,800	8,000	0.5
1307K	35	80	21	1.5	25.1	7.85	6,800	8,000	0.492
1308	40	90	23	1.5	29.6	9.7	6,000	7,000	0.709
1308K	40	90	23	1.5	29.6	9.7	6,000	7,000	0.698
1309	45	100	25	1.5	38	12.7	5,400	6,300	0.953
1309K	45	100	25	1.5	38	12.7	5,400	6,300	0.938
1310	50	110	27	2	43.5	14.1	4,900	5,800	1.2

## METRIC SERIES SELF-ALIGNING BALL BEARING

1310K	50	110	27	2	43.5	14.1	4,900	5,800	1.18
1311	55	120	29	2	51.5	17.9	4,500	5,200	1.58
1311K	55	120	29	2	51.5	17.9	4,500	5,200	1.56
1312	60	130	31	2.1	57	20.8	4,100	4,800	1.96
1312K	60	130	31	2.1	57	20.8	4,100	4,800	1.93
1313	65	140	33	2.1	62	22.9	3,800	4,500	2.42
1313K	65	140	33	2.1	62	22.9	3,800	4,500	2.38
1314	70	150	35	2.1	74.5	27.7	3,500	4,200	2.99
1315	75	160	37	2.1	79.5	30	3,300	3,900	3.55
1315K	75	160	37	2.1	79.5	30	3,300	3,900	3.5
1316	80	170	39	2.1	88.5	33	3,100	3,600	4.17
1316K	80	170	39	2.1	88.5	33	3,100	3,600	4.11
1317	85	180	41	3	97.5	38	2,900	3,400	4.96
1317K	85	180	41	3	97.5	38	2,900	3,400	4.89
1318	90	190	43	3	116	44.5	2,700	3,200	5.78
1318K	90	190	43	3	116	44.5	2,700	3,200	5.69
1319	95	200	45	3	132	51	2,600	3,000	6.69
1319K	95	200	45	3	132	51	2,600	3,000	6.59
1320	100	215	47	3	143	57.5	2,400	2,900	8.3
1320K	100	215	47	3	143	57.5	2,400	2,900	8.19
1321	105	225	49	3	156	64.5	2,300	2,700	10
1322	110	240	50	3	164	71.5	2,200	2,600	11.8
1322K	110	240	50	3	164	71.5	2,200	2,600	11.7



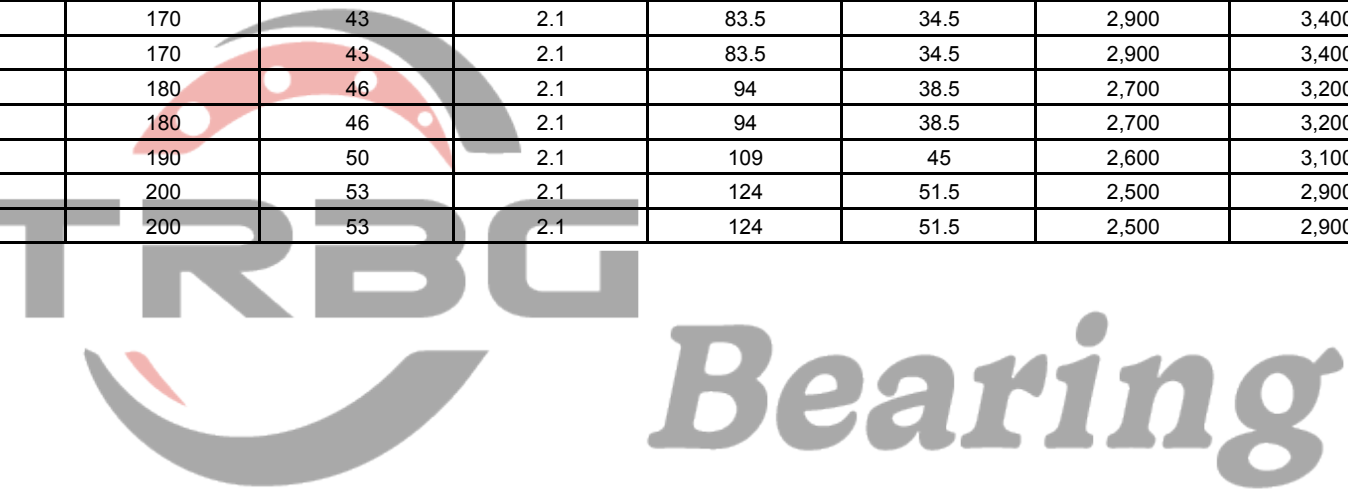
# METRIC SERIES SELF-ALIGNING BALL BEARING



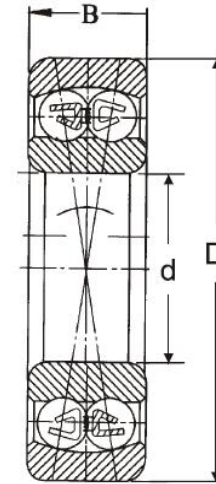
Bearing No.	Boundary dimensions				Basic load ratings(kN)		Limiting speed		Mass
	mm				Dynamic	Static	rpm		kg
	d	D	B	r <sub>sm</sub>	Cr	Cor	Grease	Oil	
2200	10	30	14	0.6	7.3	1.59	19,000	23,000	0.047
2201	12	32	14	0.6	7.6	1.73	17,000	20,000	0.051
2202	15	35	14	0.6	7.7	1.85	15,000	18,000	0.06
2203	17	40	16	0.6	9.8	2.41	13,000	16,000	0.088
2204	20	47	18	1	12.6	3.3	12,000	14,000	0.14
2204K	20	47	18	1	12.6	3.3	12,000	14,000	0.137
2205	25	52	18	1	12.3	3.45	10,000	12,000	0.157
2205K	25	52	18	1	12.3	3.45	10,000	12,000	0.153
2206	30	62	20	1	15.2	4.5	8,600	10,000	0.256
2206K	30	62	20	1	15.2	4.5	8,600	10,000	0.25
2207	35	72	23	1.1	21.5	6.6	7,500	8,800	0.392
2207K	35	72	23	1.1	21.5	6.6	7,500	8,800	0.382
2208	40	80	23	1.1	22.3	7.35	6,700	7,900	0.493
2208K	40	80	23	1.1	22.3	7.35	6,700	7,900	0.482

# METRIC SERIES SELF-ALIGNING BALL BEARING

2209	45	85	23	1.1	23.2	8.15	6,000	7,100	0.54
2209K	45	85	23	1.1	23.2	8.15	6,000	7,100	0.528
2210	50	90	23	1.1	23.2	8.45	5,500	6,400	0.583
2210K	50	90	23	1.1	23.2	8.45	5,500	6,400	0.569
2211	55	100	25	1.5	26.5	9.9	5,000	5,800	0.787
2211K	55	100	25	1.5	26.5	9.9	5,000	5,800	0.769
2212	60	110	28	1.5	34	12.6	4,600	5,400	1.08
2212K	60	110	28	1.5	34	12.6	4,600	5,400	1.06
2213	65	120	31	1.5	43.5	16.4	4,200	5,000	1.44
2213K	65	120	31	1.5	43.5	16.4	4,200	5,000	1.41
2214	70	125	31	1.5	44	17.1	3,900	4,600	1.52
2215	75	130	31	1.5	44.5	17.8	3,700	4,300	1.58
2215K	75	130	31	1.5	44.5	17.8	3,700	4,300	1.54
2216	80	140	33	2	48.5	19.9	3,400	4,000	1.99
2216K	80	140	33	2	48.5	19.9	3,400	4,000	1.95
2217	85	150	36	2	58	23.6	3,200	3,800	2.54
2217K	85	150	36	2	58	23.6	3,200	3,800	2.49
2218	90	160	40	2	70	28.7	3,100	3,600	3.19
2218K	90	160	40	2	70	28.7	3,100	3,600	3.12
2219	95	170	43	2.1	83.5	34.5	2,900	3,400	3.89
2219K	95	170	43	2.1	83.5	34.5	2,900	3,400	3.8
2220	100	180	46	2.1	94	38.5	2,700	3,200	4.65
2220K	100	180	46	2.1	94	38.5	2,700	3,200	4.54
2221	105	190	50	2.1	109	45	2,600	3,100	6.07
2222	110	200	53	2.1	124	51.5	2,500	2,900	7.1
2222K	110	200	53	2.1	124	51.5	2,500	2,900	6.94



# METRIC SERIES SELF-ALIGNING BALL BEARING



Bearing No.	Boundary dimensions				Basic load ratings(kN)		Limiting speed		Mass kg
	mm				Dynamic	Static	rpm		
	d	D	B	r <sub>smin</sub>	Cr	Cor	Grease	Oil	
2300	10	35	17	0.6	10.1	2.15	17,000	20,000	0.083
2301	12	37	17	1	11.8	2.71	15,000	17,000	0.091
2302	15	42	17	1	12	2.9	13,000	15,000	0.114
2303	17	47	19	1	14.4	3.55	11,000	14,000	0.156
2304	20	52	21	1.1	18.1	4.7	10,000	12,000	0.206
2304K	20	52	21	1.1	18.1	4.7	10,000	12,000	0.201
2305	25	62	24	1.1	24.4	6.6	8,500	10,000	0.334
2305K	25	62	24	1.1	24.4	6.6	8,500	10,000	0.326
2306	30	72	27	1.1	31.5	8.75	7,200	8,500	0.496
2306K	30	72	27	1.1	31.5	8.75	7,200	8,500	0.485
2307	35	80	31	1.5	39.5	11.3	6,300	7,400	0.671
2307K	35	80	31	1.5	39.5	11.3	6,300	7,400	0.653
2308	40	90	33	1.5	45	13.5	5,600	6,600	0.918
2308K	40	90	33	1.5	45	13.5	5,600	6,600	0.895
2309	45	100	36	1.5	54	16.7	5,000	5,900	1.23
2309K	45	100	36	1.5	54	16.7	5,000	5,900	1.2
2310	50	110	40	2	64.5	20.2	4,600	5,400	1.63
2310K	50	110	40	2	64.5	20.2	4,600	5,400	1.59



## METRIC SERIES SELF-ALIGNING BALL BEARING

2311	55	120	43	2	75.5	24	4,200	4,900	2.1
2311K	55	120	43	2	75.5	24	4,200	4,900	2.05
2312	60	130	46	2.1	87	28.2	3,800	4,500	2.59
2312K	60	130	46	2.1	87	28.2	3,800	4,500	2.52
2313	65	140	48	2.1	96	32.5	3,600	4,200	3.2
2313K	65	140	48	2.1	96	32.5	3,600	4,200	3.12
2314	70	150	51	2.1	109	37.5	3,300	3,900	3.92
2315	75	160	55	2.1	123	43	3,100	3,600	4.78
2315K	75	160	55	2.1	123	43	3,100	3,600	4.66
2316	80	170	58	2.1	128	45	2,900	3,400	5.65
2316K	80	170	58	2.1	128	45	2,900	3,400	5.51
2317	85	180	60	3	140	51.5	2,700	3,200	6.55
2317K	85	180	60	3	140	51.5	2,700	3,200	6.39
2318	90	190	64	3	152	57.5	2,600	3,000	7.75
2318K	90	190	64	3	152	57.5	2,600	3,000	7.56
2319	95	200	67	3	165	64.5	2,400	2,800	9.05
2319K	95	200	67	3	165	64.5	2,400	2,800	8.83
2320	100	215	73	3	192	79	2,300	2,700	11.5
2320K	100	215	73	3	192	79	2,300	2,700	11.2
2321	105	225	77	3	205	87	2,200	2,600	13.2
2322	110	240	80	3	217	94.5	2,100	2,400	15.8
2322K	110	240	80	3	217	94.5	2,100	2,400	15.4

